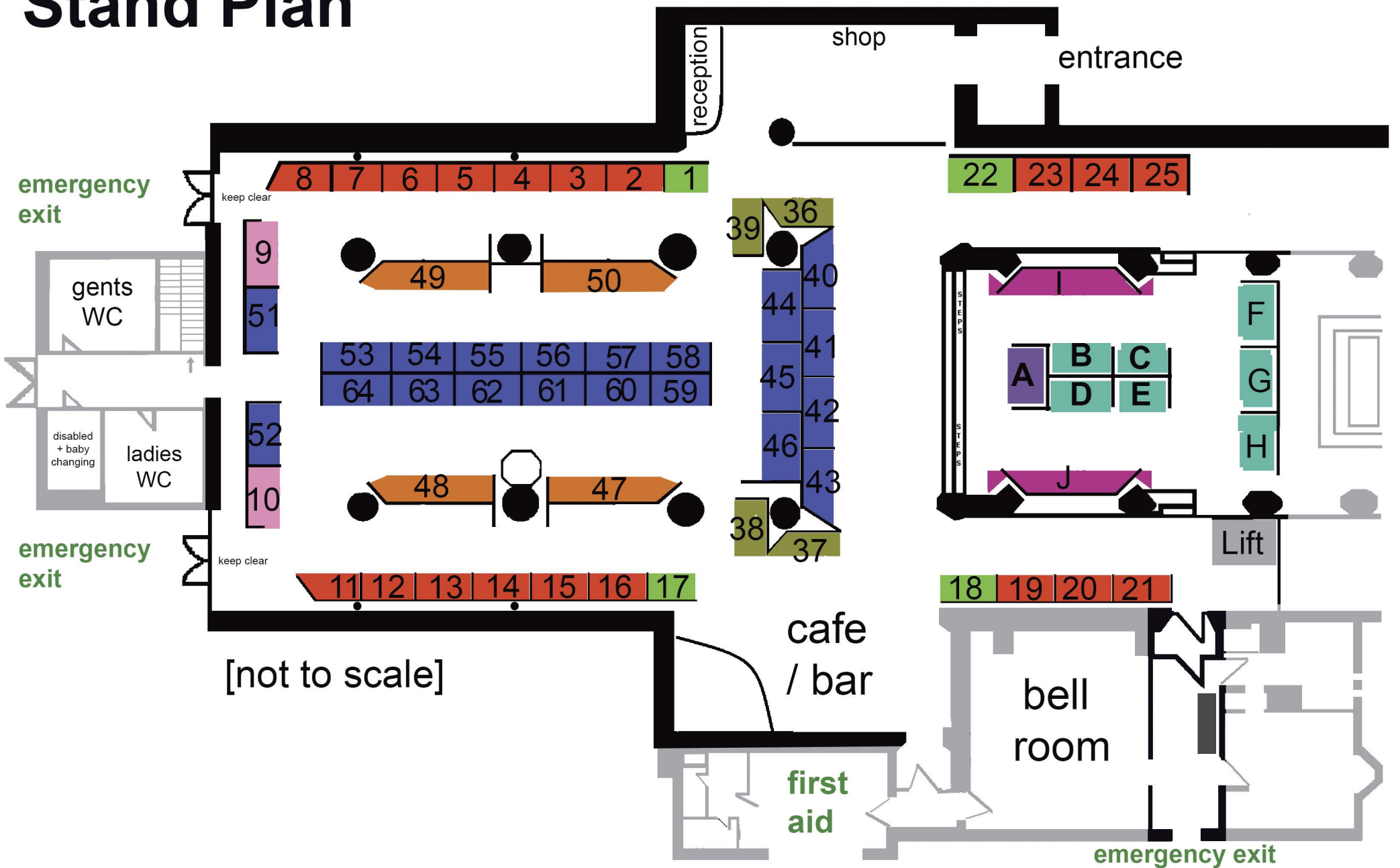
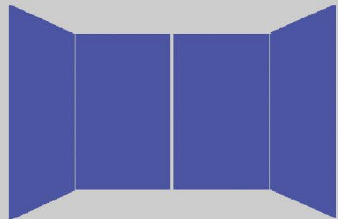


# Sparkle 2021 Stand Plan

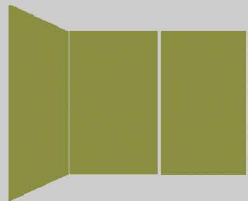


## Large Stands

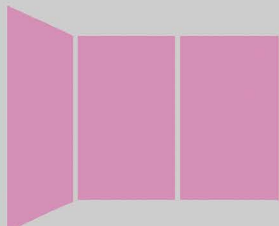
**Stands 40-43, 44-46, 51, 52, 53 - 64 :**  
**£195.83+VAT (£235 total)**  
 four panels in box shape (stands 40 & 43 are angled at one end)  
 2.4m wide x 1.2m deep x 2.4m high



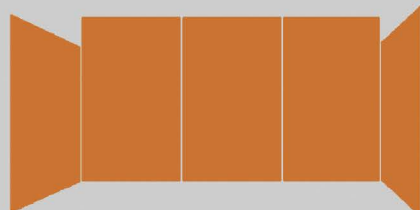
**Stand 36, 37, 38 & 39:**  
**£195.83+VAT (£235 total)**  
 three panels - open box shape  
 2.4m wide x 1.2m deep x 2.4m high (one end angled)



**Stands 9 and 10 :** £195.83+VAT (£235 total)  
 three panels - open box shape  
 2.4m wide x 1.2m deep (one end semi open) x 2.4m high

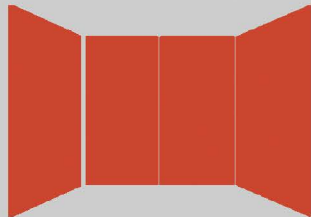


**Stands 47, 48, 49 & 50 :**  
**£250+VAT (£300 total)**  
 five panels in a box shape;  
 three x 2.4m high x 1.2m wide back panels,  
 two x 2m high x 1m wide side panels

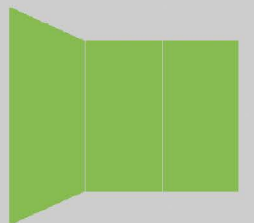


## Small Stands

**Stands 2-8, 11-16, 19-21 & 32-25:**  
**£154.17+VAT (£185 total)**  
 four panels in box shape (stands 8 and 9 - one end panel is angled)  
 2m wide x 1m deep x 2m high

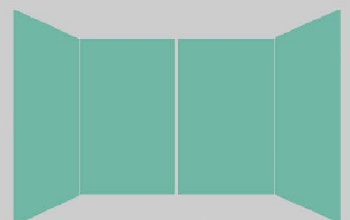


**Stands 1, 17, 18 and 22 :**  
**£154.17+VAT (£185 total)**  
 three panels in box shape  
 2m wide x 1m deep x 2m high

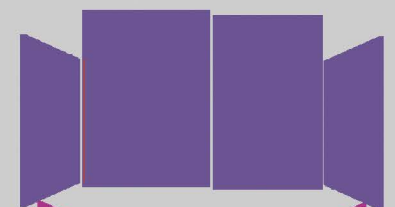


## Gourmet Food Stands

**Stands B,C,D,E,F,G & H:**  
**£195.83+VAT (£235 total)**  
 four panels in box shape (stand H will not have a full panel on the right side as you look at it face on)  
 2.4m wide x 1.2m deep x 2.4m high



**Stand A:**  
**£195.83+VAT (£235 total)**  
 four panels in box shape  
 2.4m wide x 1m deep x 2.4m high at the back (sides are 1.2m high)



**Stands I and J:**  
**£216.67+VAT (£260 total)**  
 five panels  
 2.9m wide x 1.2m deep (angled end panels) x 2.4m high

